

## From FastEST, Inc.

In the past several months, I've had the opportunity to conduct a couple of well-attended training seminars for FastDUCT & FastPIPE; the first, in October in Las Vegas, and the second, earlier this month in Atlanta. I hope the sessions were as beneficial to the attendees as they were informational for us. At the Atlanta class, we jotted down several pages of suggestions for improvement to the programs and have already begun to process the list.

Having left my career as an estimator in 2003, I don't have the luxury of day to day "hands-on" testing of our products in a practical usage setting. Therefore, we have come to rely more on criticisms and suggestions from you, our customers. A couple of suggestions from the training sessions were things we definitely would have not come up with on our own. A measuring stick for the On-Screen Digitizer, allowing the user to see the length of the pipe or duct as it is taken off, will be very easy to add. (I, myself, didn't think this feature would have much usage when it was suggested in-house.)

Thanks to any who attended these training sessions, and for those who didn't, there will be more in the future.

Thank you,



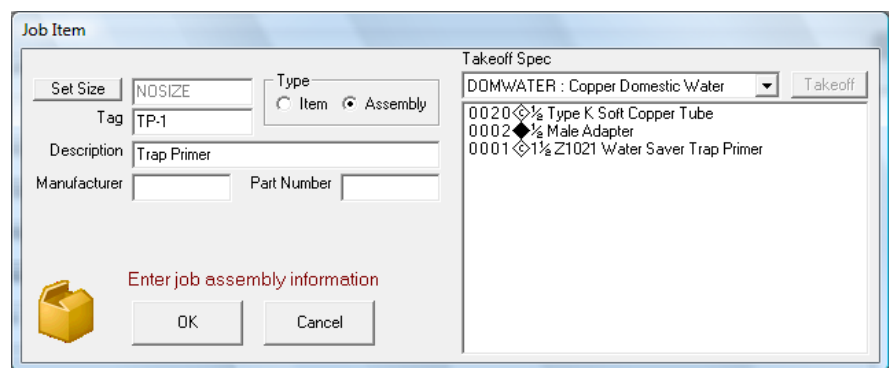
Mark Oxler, President  
FastEST, Inc.


## The Assembly Job Item Feature Provides Takeoff Flexibility

Until the release of FastPIPE and FastDUCT version 7.4R6 in December, Job Items were limited to being either a single component or a group of components selected from the Catalog. Now, by assigning a Spec to an Assembly Job Item, piping and duct details can be added directly into a Takeoff Section. This will allow you to have a more continuous takeoff process.

For example, suppose in FastPIPE you want to be able to take off trap primer assemblies, which are predominantly copper pipe and fittings, while you are taking off your underground cast iron or PVC sanitary waste piping. First, you can build the assembly, as follows. At the Job Items tab, click on New. Select Assembly on the New Job Item window. Fill out the Item, and Description fields, and assign a size if desired. (The Size, Manufacturer, and Part Number are optional fields.) Assign a Spec (the Spec must be in the Spec list on your job), and click on the Takeoff button.

Take off the desired items from the takeoff screen as you would in a takeoff section. Spec items, single Job Items, and Catalog Items are all eligible for takeoff. When the take off is complete, click Close. This brings you back to the Job Item window where you can see the takeoff items displayed on the right half of the window. Click on OK to save the item.



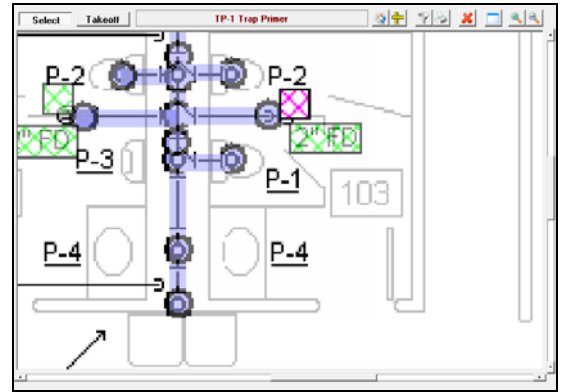
Once you have the item saved, it will appear in the Job Items list on your takeoff screen of any section. Assembly type Job Items will be designated with the  symbol. Just select the Job Item and enter a quantity or take it off directly with the On-Screen Digitizer.

(more on back)

## The Assembly Job Item Feature Provides Takeoff Flexibility (cont.)

Because the Assembly Job Item feature can be assigned a different Spec than the Spec assigned to the Section, it can be used for many different kinds of piping or duct details. Like the old Job Items, they can be copied from any job to the current job you are working on and can be saved into a Template job.

In the December update, we added two new jobs into the Specs cabinet of FastPIPE, Updated FastPIPE HVAC Assembly Job Items and Updated FastPIPE Plumbing Assembly Job Items. These jobs include Assembly Job Items, created from our existing assemblies found in the Plumbing and HVAC cabinets.



With the On-Screen Digitizer, Job Items can be placed directly onto the screen.

### New Customers

Johnson Plumbing  
Sparks, NV

Brentwood Plumbing & Mechanical  
Chesterfield Township, MI

Warrenty Plumbing Services  
Antioch, CA

Byers Mechanical Contractors, Inc.  
Mt. Crawford, VA

DeLuca Plumbing, LLC  
St. Louis, MO

Manderfield PHE, Inc.  
Atlantic Mine, MI

Meistad Plumbing  
Houston, TX

Rodger Jeffcoats, Inc.  
Ardmore, OK

Liquid Tech Plumbing  
Long Island City, NY

Bergmann-Roscow Plumbing, Inc.  
Belleville, IL

Abar Plumbing & Heating  
Goshen, NY

DiRienzo Mechanical Contractors  
New Haven, CT

Holder Construction  
Atlanta, GA

Grizzly Plumbing & Mechanical  
Hayden, ID

Velocity Plumbing, Inc.  
Tampa, FL

Precision Plumbing Services  
Fort Myers, FL

Havel Brothers  
Indianapolis, IN

Mechanical Connections  
Iola, WI

Zager Plumbing  
Deerfield Beach, FL

Iron Age Plumbing & Piping  
Gibsonton, FL

Ohio Air Conditioning  
Cleveland, OH

Holmes Plumbing  
Lady Lake, FL

Climate Systems Inc.  
Charlotte, NC

Mechanical & Process Systems  
Hutto, TX

Plaas Inc.  
Red Wing, MN

Ingold Company Inc.  
Hickory, NC

Belle Engineering  
Bloomington, IL

Quail Plumbing Inc.  
Phoenix, AZ

Healthcare Plumbing Services, Inc.  
Winter Springs, FL

American Air Systems,  
Edison, NJ

American Plumbing Inc.  
St. Joseph, MO

DPR Construction  
Phoenix, AZ

Airmakers Heating & AC Inc.  
Raleigh, NC

Hood Plumbing Contractors, Inc.  
Corona, CA

Master Plumbing of South Florida  
Sunrise, FL

Liquid Tech Plumbing  
Long Island City, NY

Vision Mechanical Services  
Simi Valley, CA

Walrath Heating & Air Conditioning  
Lakewood, CO

Personal Temperature Services  
North Brunswick, NJ