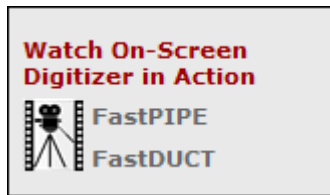


From FastEST, Inc.

We are very excited about the release of FastPIPE & FastDUCT version 8.3R2. More features have been added than we have added in quite some time.

While many of the features are improvements to the On-Screen Digitizer, there are many others which do not require having the On-Screen Digitizer. Many of the features in this latest update are based on comments and feedback we receive from you. We appreciate whatever input you can give to help make our products better.

About half of our existing customers have added the On-Screen Digitizer and their feedback have helped us to enhance it and develop new features. If you do not have the On-Screen Digitizer, visit our website and watch the short movie. Or call us our office at 800-828-7108 and we can give you a short demonstration.



www.fastest-inc.com

Call us if you have any questions or comments.

Thank you,

Mark Oxler, President
FastEST, Inc.

New Features Improve On-Screen Digitizer

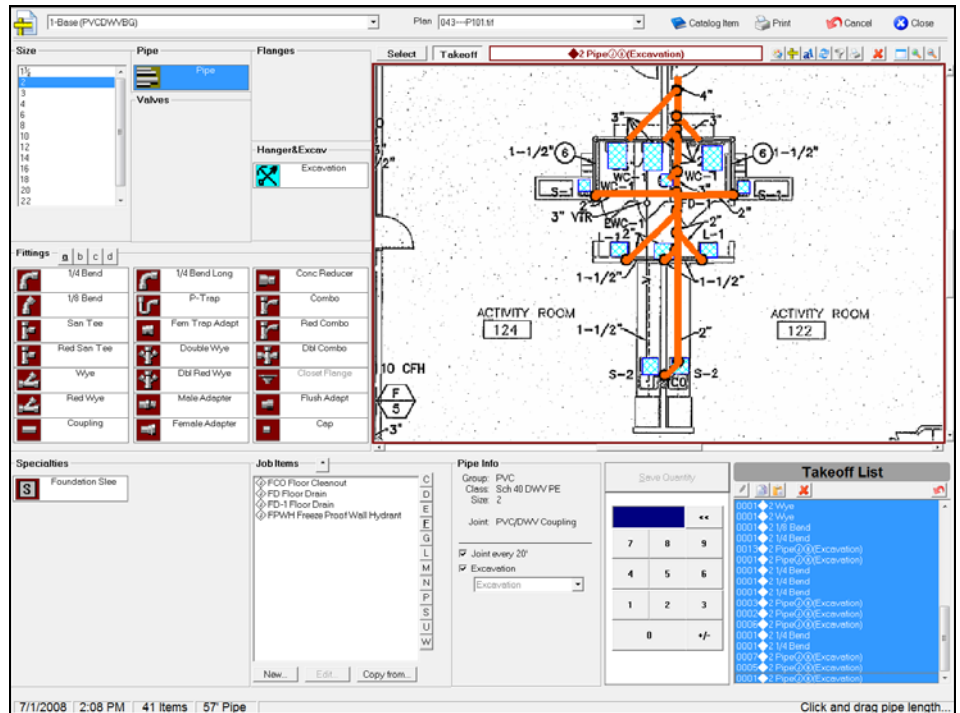
Just eight months after the initial release of the On-Screen Digitizer for FastPIPE and FastDUCT Estimating software, the new release of version 8.3R2 has added several new and innovative features. (Some of these features are also available to customers who do not have the On-Screen Digitizer. They are as follows.

Two Screen Display

If your computer has a driver for two screen display, you can have the plan image on a second monitor. This allows for the possibility of having a second monitor, which is larger, to allow you to see more of the plan image.

Multiple Item Select, Copy, and Paste

By holding the Ctrl or Shift key, the user can now select multiple items in the Takeoff List. The selected items can be copied and pasted to a different location either once or multiple times. The group can even be pasted to another plan sheet or in another Takeoff section. The group of items can also be pasted to an "Assembly Type" Job Item, so that the items can be called upon at a later time. And the group of items can also be deleted.



In FastPIPE 8.3R2, you can select multiple items from either the Takeoff List or the Plan.

(more on back)

New Features Improve On-Screen Digitizer (cont.)

Area Calculator

You can now calculate areas in square feet of any region on your Plan image, for which you have assigned a scale.

Plan Notes

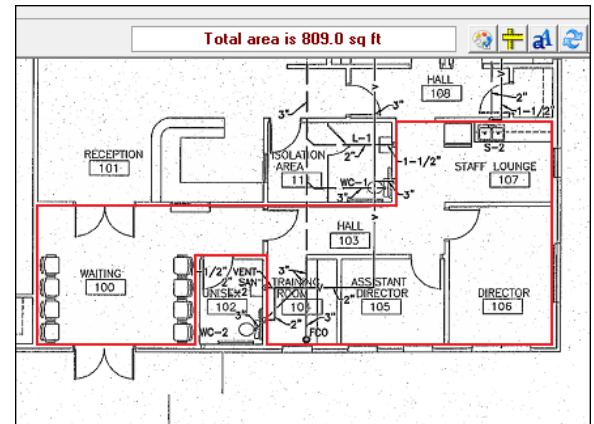
Plan notes can be added to the Plan image. The user can choose the font, font size and color, enclose the note in a box, and a pointer. The note can be located anywhere on the drawing.

Section Copy and Paste

When copying Takeoff sections from a project that has takeoff completed on-screen, the program will give you the option of importing the applicable plan or assigning the graphical takeoff to a new plan.

Filter Default

A new default setting has been added to the Configuration file to allow the user to see the takeoff of All Sections when viewing a Plan image on-screen.



FastPIPE or FastDUCT 8.3R2 allows you to calculate areas of any region.

New Customers

Mechanical Connections
Iola, WI

Busto Plumbing Services, Inc.
Tampa, FL

Pike's Peak Heating & A/C
Security, CO

SBC Heating & A/C Inc.
Bloomington, IL

T.J. Falvo Mechanical Inc.
Northfield, NJ

A & D Total Plumbing
Wichita, KS

Temp Control
Brownsville, TX

Air Comfort, Inc.
Fort Collins, CO

Boyd Plumbing Co
Cantonment, FL

Unified Plumbing LLC
Eagle, ID

Riverview Plumbing Inc.
Dorchester, NJ

T G Consulting Corp.
Littleton, CO

Bianchi Plumbing
Roseville, CA

Tri-Valley Mechanical, Inc.
Canyon Country, CA

Mathis Heating & Cooling, Inc.
Earth City, MO

Highland Plumbing
Joliet, IL

Carolina Comfort Systems, Inc.
Conway, SC

LW Heating & Air, Inc.
Wynne, AR

The Duct Shop, Inc.
Harvey, LA

Medina's Plumbing
San Pedro, CA

Team Thomason, Inc.
Delray Beach, FL

Jett Plumbing
O'Fallon, MO

F.A. Williams, Inc.
Belmont, MA

Champion Plumbing
Eagan, MN

II-S Mechanical, Inc.
Stayton, OR

Pipeline Specialties
Colorado Springs, CO

Snyder Plumbing
Vero Beach, FL